

Webb Core 1/4" x 4'-0" x 2'-0" Blank-Off Ceiling Panel (Non-Walkable)

Panels have been designed to be incorporated into a 2" gasketed extruded ceiling system.

Strength and Durability

Utilizing a 1/4" overall thickness panel and a 3/4" cell .003 lightweight aluminum honeycomb core can assure a minimum deflection.

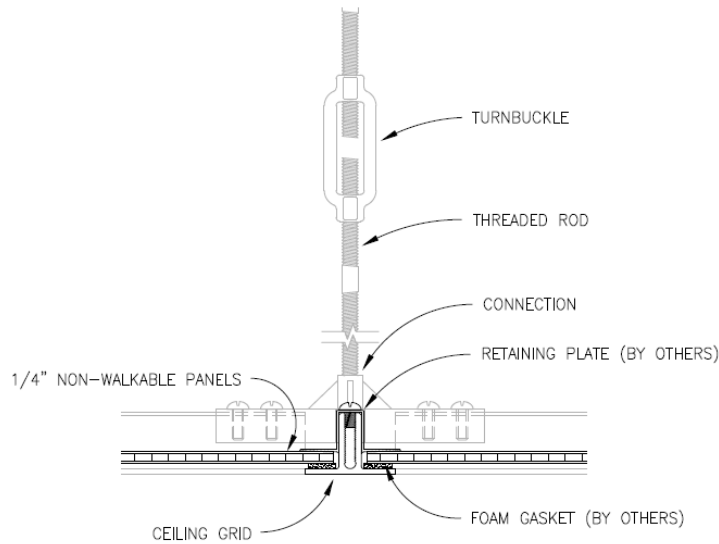


Fig. 1
1/4" Panel Cross Section @ Ceiling Grid

High Gloss Polar White Epoxy Finish

Product Code	DC 450W2001	Minimum Pencil Hardness	H+ Eagle Turquoise
Product Type	Epoxy/reverse roll coat	Solvent Resistance	50+ Double Rubs, Mek
Intended End Use	Interior Wall Panels	Reverse Impact	1.5X MT THX IN. Lbs.
			No tape lift off
Chemical Resistance:	Available upon request	Weight	Approx. 2.1 lbs./ Sq. Ft.
Laboratory: 60 Gloss	80+		
Production: 60 Gloss	80+	Issue Date 09/02/2011	

(Ceiling access must be limited to authorized personnel only, and thereby uses appropriate live loads. Loads are consistent with those required by the U.B.C. Durable signage stating "AUTHORIZED PERSONNEL ONLY" should be posted at access points per U.B.C. 1604.5 *1994 Edition)

